

# Research Development

Is your new best friend



**Research** | Development

**Cornell CALS** College of Agriculture  
and Life Sciences



Who we are and how  
we help





# The Team

## **Carmel Lee**

Director of Research Development

[cl229@cornell.edu](mailto:cl229@cornell.edu)

## **Liz Diaz**

Administrative Coordinator

[emd239@cornell.edu](mailto:emd239@cornell.edu)

## **Gayle Fagan**

Program Manager

[gcf37@cornell.edu](mailto:gcf37@cornell.edu)

## **Josephine Martell**

Director of Research Development, CALS

[CALS Office of Research Development](mailto:jem522@cornell.edu)

[jem522@cornell.edu](mailto:jem522@cornell.edu)

## **Tiffany Fleming**

Broader Impacts Design Manager

[tfleming@cornell.edu](mailto:tfleming@cornell.edu)



# Services We Offer



- Develop and manage complex grant proposals
- Writing, editing and review
- Identify funding opportunities for faculty
- Cultivate early career faculty
- Identify collaborators and campus resources for faculty
- Conduct grant training and workshops
- Manage limited submission competitions
- Promote prizes and awards; support nominations



---

# CALS Office of Research Development

---

## **Vision:**

To advance CALS' capacity for diverse, equitable, and inclusive research and scholarship in line with college, university, New York State and federal priorities.



# Research

---

Defying disciplinary boundaries to create measurable, scalable and enduring solutions since 1888.





CornellResearch  
OFFICE OF RESEARCH  
DEVELOPMENT



Carmel Lee



Josephine Martell



Tiffany Fleming



Gayle Fagan



Liz Diaz

## SIX-MONTH SNAPSHOT 2020

P  
R  
O  
P  
O  
S  
A  
L  
S

**59** Proposals supported

**\$144M** Value of supported proposals

Representing: **8** Colleges or Units  
**31** Departments  
**55** Faculty

## A W A R D S

**9** Awards finalized  
**\$35.9M** Total Awarded

*Chris Ober (CCB): "Your work is excellent. Almost magic. I wish I'd had your help years ago."*

*Ashim Dutta (BEE): "In my 30 years at Cornell, I've never had a strategic conversation about my grants like this one. It was so helpful."*

\*Proposal & award data contains only those representing significant involvement of RD staff

## C O N C I E R G E

**21** Faculty served by Concierge



Carmel providing Concierge services

Agriculture & Life Sciences

Arts & Sciences

Art, Architecture & Planning

Engineering

14  
1  
1  
5

T  
R  
A  
I  
N  
I  
N  
G

- Early Career
- Workshops
- Outreach
- Grant Writing
- Trainee Engagement
- Diversity & Inclusion

- 5 faculty and trainee workshops
- 37 hours of programming in total
- 161 participants attended training



Fall 2019 EC Grant Fellows Workshop

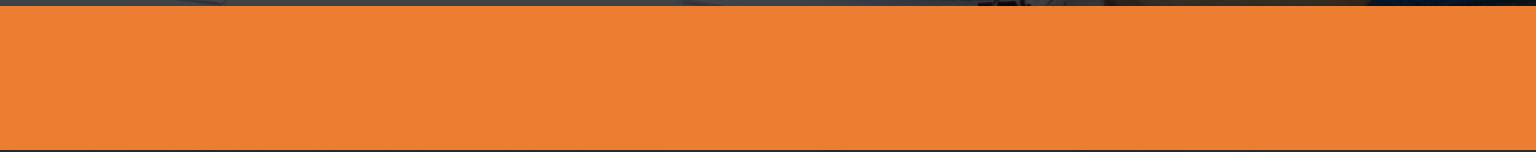
# Sponsored Project Lifecycle *Ideal*...







# Programs







# Research Concierge

- The Research Concierge Service managed by the Research Development team offers individual consultations to help new faculty members develop their strategic research plans.
- We also help with:
  - ✓ Navigating Cornell's research processes, requirements, forms, and systems
  - ✓ Identifying and evaluating funding opportunities
  - ✓ Connecting with institutional resources
  - ✓ Sourcing potential collaborators
  - ✓ Transferring existing grants from a previous institution
- Make an appointment to meet with our RD team by visiting our website: <https://researchservices.cornell.edu/research-concierge>
- Email with questions: [ovpr\\_concierge@cornell.edu](mailto:ovpr_concierge@cornell.edu)



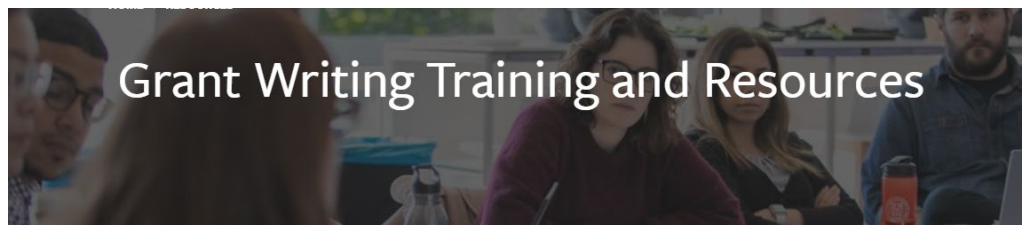


# Training & Resources

- Cornell Early Career Faculty Mentoring Program
  - Grant Fellows Workshop (Fall & Spring)
- NSF CAREER Workshop series (January through May 2021)
- Broader Impact Identity Workshop (Fall & Spring)
- Getting DOD Funding (Summer)
- NIH Workshops
  - Mock study sections through PACE (<https://blogs.cornell.edu/pace/>)
- [REFRESH](#) (ongoing)

## Main page:

<https://researchservices.cornell.edu/resources/grant-writing-training-and-resources>

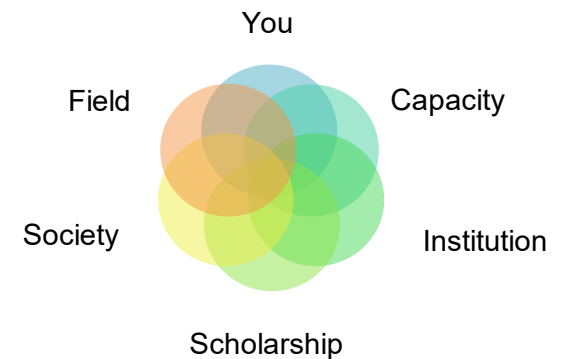


# Broader Impacts

“potential of research to benefit society and contribute to the achievement of specific desired societal outcomes.” - NSF

## [NSF Broader Impacts Resources](#)

- Workshops & Trainings
- Getting Started with BI Design
- Consultations & Project Development
- Identity & Strategy
- Leveraging Resources
- Partnership Connections
- Proposal Development, Grant Writing, Review





# Funding Resources





# Locating External Funding Opportunities



## Searchable databases:

<https://researchservices.cornell.edu/proposal/Find-Your-Next-Funding-Opportunity>

## Foundation Funding:

<https://researchservices.cornell.edu/resources/foundation-funding>

## Faculty Prizes and Awards:

<https://researchservices.cornell.edu/resources/faculty-recognition-prizes-and-awards>

## New York State Funding:

<https://researchservices.cornell.edu/resources/ny-state-funding>

## Recurring and Prestigious Awards:

<https://researchservices.cornell.edu/resources/recurring-and-prestigious-funding-opportunities>



# Locating Internal Opportunities

Office of Engagement Initiatives – [Faculty Grants & Awards](#)

Public Service Center – [Kaplan Faculty Fellowship](#)

Office of Faculty Development and Diversity – [Professional Development Grants](#)

Cornell Counsel for the Arts- [Annual Grant Program](#)

Rural Humanities Initiative – [Faculty Grants](#)

## [Research Development Internal Funding Webpage](#)



# Limited Submissions

Funding opportunities in which **Cornell** is limited in the number of nominations/proposals/applications it may submit to a sponsor

## Where are LS competitions posted?

CU-RES email list

(<https://researchservices.cornell.edu/resources/join-research-mailing-lists-list-servs>)

Cornell InfoReady Review website

(<https://cornell.infoready4.com/#homepage>)

## [Limited Submission Webpage](#)



Explore & Apply to  
Limited Submissions  
Internal Competitions





# The Limited Submissions Process

---

- OSP RD and OVPR coordinate internal selection process (internal competitions)
- Applicants must apply via web portal (InfoReady Review)
- # of internal applications > limit = Research Advisory Committee (RAC) reviews
  - Review criteria based on sponsor's solicitation and program objectives, and scientific merit and scholarly strength
- Time from internal competition deadline to applicants notified of RAC decisions - typically two weeks
- WCM has own LS website and process, but several competitions are shared
- Some exceptions to web application portal (e.g., Sloan Foundation Research Fellowships)



# Helpful Resources

## Join Our Mailing List:

- **To subscribe:** send email to [CU-RES-ADMIN-L-REQUEST@cornell.edu](mailto:CU-RES-ADMIN-L-REQUEST@cornell.edu)
- **Subject line of email:** type the single word *join*.
- **Message body:** must be blank (no signature).

## CALS List:

- **To subscribe:** send email to [CALS-FUNDING-OPPORTUNITIES-L-request@cornell.edu](mailto:CALS-FUNDING-OPPORTUNITIES-L-request@cornell.edu)
- **Subject line of email:** type the single word *join*.
- **Message body:** must be blank (no signature).

## Contact us at:

[proposal-adv-osp@cornell.edu](mailto:proposal-adv-osp@cornell.edu)

## [Research Development Main Webpage](#)

Cornell University  
CornellResearch  
ESSENTIAL TOOLS SEARCH  
HOME > PREPARE A PROPOSAL  
Research | Development  
Proposal Advancement  
Related Pages: NSF Broader Impacts Resources | Social Sciences Research Resources | Research Concierge Service | Early Career Faculty Research Funding





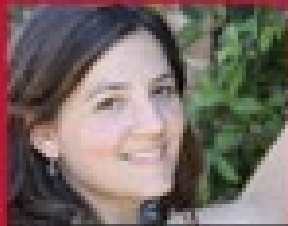
# Questions



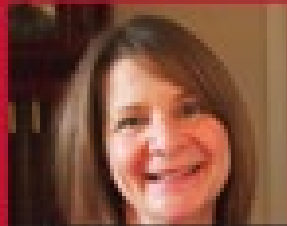
Carmel Lee



Josephine Martell



Tiffany Fleming



Gayle Fagan



Liz Diaz

